

Infra Products





IndoAsian, recognized for best quality products at unmatched price for more than 57 years now. Our value engineering has given us the cutting edge to deliver products which are robust in performance and always trusted by its customers.

As the businesses are growing rapidly so is the infrastructure, we present to you the customized product solutions for your electricity protection, distribution and control requirement. IndoAsian has a proven track record of providing these products for Govt. utilities and leading multinationals across Residential, Commercial & Industrial segments.

In the ever increasing electricity management requirement, to ensure the reliable and consistent product performance, your valuable projects deserve the right product which *Makes sense!!*

Contents

- Power Panel
- Lighting Panel
- Feeder Pillar
- Meter Panel
- Plug & Socket Panel
- Automatic Power Factor Correction Panel (APFC)
- Electrical Heat Tracing Panel (EHT)
- Low Voltage Distribution Board
- Customised DBs
 - Pre Wired DB • Timer DB • Junction Box / Busbar Chamber
- Fuse Cutouts
 - Street Light • House Service • Pole Mounting Aerial Fuse





Power Panel

Used for power distribution & control to provide reliable and effective service. These panels are manufactured as per client's specifications and requirements which very well meet the industry demands.

Rated Current	<ul style="list-style-type: none">• Up to 6300 A
Short Time Current	<ul style="list-style-type: none">• 50 KA for 1 Sec[^]
Degree of Protection	<ul style="list-style-type: none">• Up to IP 55
Type Tested for	<ul style="list-style-type: none">• Short Time Current• Temperature Rise• Degree of Protection
Bus Bar	<ul style="list-style-type: none">• Aluminum or Copper
Enclosure Material	<ul style="list-style-type: none">• CRCA/GP Sheet/ Aluminum Sheet
Application	<ul style="list-style-type: none">• Industries like Power, Steel, Refineries, Petro Chemical, Fertilizer, Oil & Gas plants and Commercial buildings

[^] Tested for Aluminium busbar (horizontal & vertical dropper)



Lighting Panel

The range of lighting panel offers complete solution for controlling power for lighting loads manually or automatically.

Material

- CRCA / GP / AL 1.6mm – 3mm
- Powder Coating Shade: RAL 7032 / 7035, Jay – White

Protection Category

- IP42 to IP55
- 10kA for 1 Sec

Incomer

- TP upto 250A
- MCB/SFU/MCCB

Features

Lighting Panels are designed as per customer requirement to have complete controlling of power through push buttons, timers and photocell sensors. Detachable Base plate assembly enables them to be assembled or rectified easily. Termination of outgoing of MCB onto terminal blocks make them ready to install. Compact busbar systems provide the option of increasing the rating, thereby increasing the no. of outgoing connections.

- Control of power through various arrangements such as push buttons, photo cell, timers etc.
- Pad locking arrangement for safety and sealing.
- Red-Green indicators for On-Off indication
- Selector switch availability for selection of controlling mode
- Detachable gland plates on Top & bottom for ease of cabling

Applications

Finds extensive use on construction site, industry, residential complex, substation lighting, power plant lighting & metro rail.



Feeder Pillar

An extensive range of low voltage feeder pillars from the transformer to the end distribution, providing solutions from fuse protection to the latest circuit breaker technology. The assemblies are purely custom built to meet customer specific needs. Feeder Pillar can be installed outdoors or indoors, in a public or private network to protect and provide bulk distribution of electricity to residential & commercial complexes.

Din Type Feeder Pillar:

This range goes one step further with advanced Vertical fuse rail & fuse switch (up to 630A) to utilize the blade(DIN) type fuse in outgoing feeders. Also available with conventional Fuse Base type.

Wedge Type Feeder Pillar:

Catering to the specific requirements of some regions, which offers a wide range of Wedge type feeder pillars with Vertical fuse rail (up to 630A) suitable for accommodating Wedge type fuses in outgoing feeders.

Other Ranges:

Incomer Options: SD / SDF, MCCB, ACB

Outgoing Options: SDF, MCCB, various type of cutouts such as House Service Cutouts / Heavy Duty Cutouts

- Completely type tested as per IEC 61439-1 at CPRI/ASTA
- System – 415/440V, 3 phase, 4wire
- Highest current rating available: 2400A.
- Increased Degree of protection up to IP-55 to provide maximum protection in outdoor installation.
- Short circuit withstand strength up to 46kA for 1 sec.
- Wide choice for selection of enclosure material as CRCA/GP Sheet or Aluminum Sheet.
- All live exposed parts screened - greatly reduce the risk of electrical shock during service conditions.
- Available with wide range of accessories as per customer requirement as MDI, MFM, KWH, Voltmeters, Cable clamps & pad locking etc.
- Application - Used by Utilities (Electricity Board) for power distribution in housing, commercial and industrial complex.



Meter Panel

Meter panels are used to bring all the energy meters at a common point for ease of distribution, data analysis and safety reasons.

Material

- CRCA 1.6mm – 2mm
- Powder Coating Shade: RAL 7032 / 7035, Jay – White

Protection Category

- IP42 to IP55

Incomer

- TP/FP MCB from 63A to 125A

Outgoing

- Energy meters with MCB rating from 10A to 40A
- No. of ways: 4/6/8

Features

- Meter boards consist of a compact busbar system controlled by three phase incomer MCB.
- Outgoing connections are taken through MCB with separate energy meter for each connection.
- Separate pad locking of each metering compartment
- Termination of outgoing connections onto terminal strips makes them ready to install
- Acrylic meter windows for data reading in pad locked position

Applications

- Meter panels are used in housing complex, commercial complex, shopping mall etc.



Plug & Socket Panel

The Plug & Socket panels are built purposely to plug in distribution assemblies supplied to refineries, manufacturing industry, petrol pump, lighting load etc. The panel is supplied with fully wired & tested, therefore enabling quick and efficient installation.

- | | |
|----------------------------|---|
| Material | <ul style="list-style-type: none">• CRCA 1.2mm – 2mm• Powder Coating Shade: Jay – White |
| Protection Category | <ul style="list-style-type: none">• IP42 to IP55 |
| Incomer | <ul style="list-style-type: none">• FP RCCB + FP MCB / Isolator from 63A to 125A• MCCB from 63A to 200A |
| Outgoing | <ul style="list-style-type: none">• Sockets: SP & TP (Metal Clad/Insulated)• Rating 16A, 20A, 32A, 63A |
| Features | <ul style="list-style-type: none">• Plug & Socket Panel comes with fitted three/five pin sockets, individually protected from over currents and short circuits by the use of MCB at outgoing circuits.• Individually protected sockets for overall protection of the system.• Both SP & TP sockets for Single & Three phase supply respectively.• Availability of base frames for outdoor applications for foundation mounting location. |
| Applications | <ul style="list-style-type: none">• These have applications in refineries for maintenance or setting up of temporary connections, power plant, large commercial site etc. |



Automatic Power Factor Correction Panel (APFC)

Most of the electrical loads are inductive in nature resulting in lagging power factor. The most practical and economical solution to improve the power factor (PF) is to provide reactive compensation by installing power capacitors of suitable rating at strategic locations. For accomplishing the same low voltage (LV) capacitors are being extensively used both as fixed capacitor banks and in Automatic Power Factor Correction (APFC) Panels.

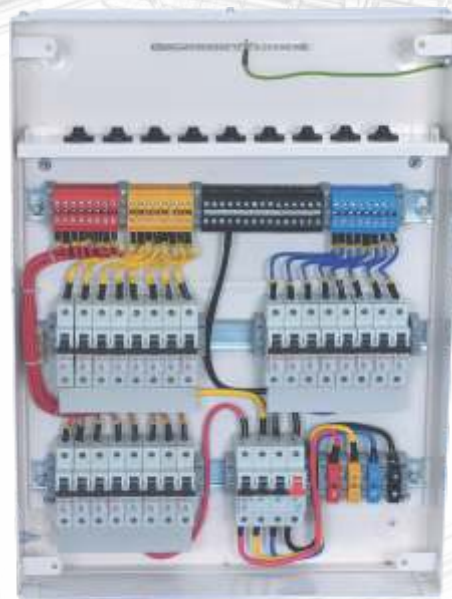
System	<ul style="list-style-type: none">• 415 V, 3 Phase, 3 or 4 Wire, 50 Hz
Degree of Protection	<ul style="list-style-type: none">• Up to IP55
Switching	<ul style="list-style-type: none">• Manual / Automatic
Cooling	<ul style="list-style-type: none">• Natural / Forced
PF Controller	<ul style="list-style-type: none">• Upto 20 stages
Bus Bar	<ul style="list-style-type: none">• Aluminum or Copper
Enclosure material	<ul style="list-style-type: none">• CRCA/GP Sheet/ Aluminum Sheet
Application	<ul style="list-style-type: none">• Industries where power factor improvement & correction required, like Steel/Paper mills, Garment Industries etc.



Low Voltage Distribution Board

Single & Three phase pole mounted DB fitted with Copper/Aluminium busbars for outgoing connections, in conjunction with MCCB as main protection device and installed energy meters for data measurement & analysis.

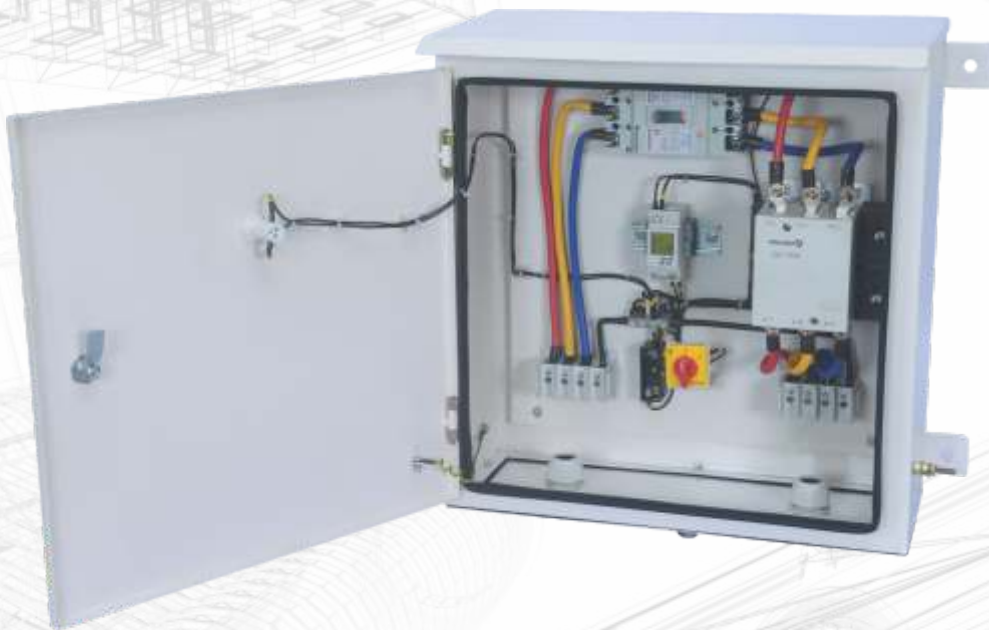
- | | |
|----------------------------|---|
| Material | <ul style="list-style-type: none">• CRCA 1.2mm – 2mm• Powder Coating Shade: RAL 7032 / 7035, Jay – White |
| Protection Category | <ul style="list-style-type: none">• IP42 to IP55 |
| Incomer | <ul style="list-style-type: none">• MCCB from 63A to 200A |
| Outgoing | <ul style="list-style-type: none">• Terminal on busbars |
| Features | <ul style="list-style-type: none">• MCCB to ensure circuit protection from overload & short circuit.• Available with Direct / CT operated energy meters.• Pad locking arrangement to lock / seal DB.• Availability of models that can be directly mounted on transformer bushings. |
| Applications | <ul style="list-style-type: none">• Used for distribution of power in urban/rural areas with installed energy meters to keep a check of power theft and data analysis for power management. |



Pre Wired DB

Pre wired DB is fully wired & tested DB, enabling quick and efficient installation in residential complex, office, shopping mall etc.

- | | |
|----------------------------|---|
| Material | <ul style="list-style-type: none">• CRCA 1.6mm – 2mm• Powder Coating Shade: RAL 7032 / 7035, Jay – White |
| Protection Category | <ul style="list-style-type: none">• IP20 to IP42 |
| Incomer | <ul style="list-style-type: none">• DP/FP MCB or Isolator from 32A to 125A |
| Outgoing | <ul style="list-style-type: none">• SP MCB 6A, 10A, 16A, 20A, 32A• No. of ways: 4/6/8/12/14/16• Type: SPN/TPN |
| Features | <ul style="list-style-type: none">• Pre wired DB are fully wired from start to end at terminal blocks for outgoing connections. Each outgoing circuit is separately protected from overload current & short circuit by MCB, indicating lamp provided for live circuit indication. |
| Applications | <ul style="list-style-type: none">• Pre wired DB find extensive use in shopping mall, housing complex, office, DG MAP, Housing complex etc. |



Timer DB

Electricity is exponentially taking over our life style. Its consumption in our life has gone up many folds. Its usage has gone up neck pace in various applications like domestic and industrial. This has forced us to utilize electrical energy in a safe and efficient way, so that it continues to play a pivotal role in our life. This requires a design/solution which can protect from overload and short circuit in addition to saving energy in every possible way. Timer DB are prefabricated and engineered solution protection to save energy for lighting applications.

Features

- Aesthetically appealing with locking facility
- IP54 degree of protection
- Switch On-Off street lights on time scheduling basis by incorporating an analog/digital time switch and contactor.
- Rating of contactor depends on the luminaires and wattage of lighting loads.
- Range includes from 16A to 110A with analog/digital time switch. Model incorporating energy meter is also available on request.



Junction Box / Busbar Chamber

Busbar chamber offers ultimate solution in taking number of outgoing connections from single incoming source.

Material	<ul style="list-style-type: none">• CRCA/FRPP 1.6mm – 2mm• Powder Coating Shade: RAL 7032 / 7035, Jay – White
Protection Category	<ul style="list-style-type: none">• IP20 to IP42
Incomer	<ul style="list-style-type: none">• Termination on busbars• Rating 100A to 630A
Outgoing	<ul style="list-style-type: none">• Termination on busbars• Type: SPN/TPN
Features	<ul style="list-style-type: none">• The Busbar chamber is available in SP/TP arrangement system equipped with copper/aluminum busbars duly fitted with cable lugs of suitable size as per customer requirement, pre assembled lugs for easy termination of cables• Adequate space for cable termination directly on busbars.• Pad locking arrangement to lock/seal DB, availability of wall/pole mounting with clamps of suitable size arrangement.
Applications	Used extensively in industry, housing complex, street lighting junction, shopping mall, utilities etc.



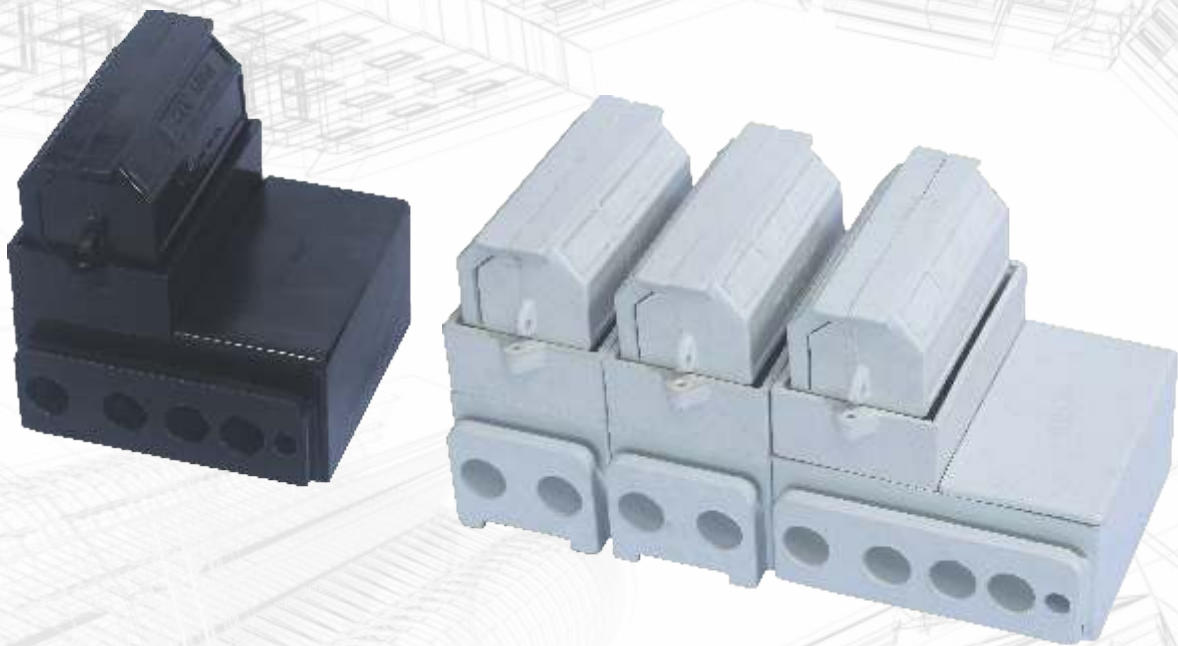
Fuse Cutouts

IndoAsian brings the standard for safety and convenience in a power distribution system. Introducing, Street Light Cutout, House Service Cutout & Pole mounting aerial fuse cutout.

These cutouts provide backup protection to the distribution system and are used in domestic and industrial electric circuit protection with Distribution Board. Lighting columns provide reliable street lighting and hence improve road safety.

Street Light Cutouts

- Manufactured out of CRCA / GP Sheet Steel, Powder Coated for aesthetically superior finish, thickness: Base - 3mm, cover and flap: 1.25mm
- Suitable for tropical conditions
- Available in complete range from one way, two way, four way & five way type either with fuse carrier or MCB
- Available with Gland sizes BW 25 or BW 32, and 2/3 nylon cable glands with shrouds of best quality
- Fully meet IEC design criteria
- Tested and approved as per IP44



House Service Cutouts

- Rating up to 100A
- Compliant with BS 1361
- Available in Single Pole, Single Pole Neutral and Triple Pole Neutral configuration
- Suitable for ZR (cylindrical) type fuse links as specified in BS 1361

These are made of fine quality Glass Re-inforced Polyester Moulding (DMC) or Bakelite material which provides safety, strength, durability & excellent tracking resistance. Tin Plated phase terminals are used to ensure low contact resistance and prevent oxidation. Serrated single or double entry phase & neutral terminals are suitable for Al or Cu conductors up to 35mm². C.H head screws ensure effective & secure connection.

Incoming phase terminal on the fuse base will be protected with Nylon Shield - Red Colour. Provision given for sealing the fuse carrier to the fuse base when fitted to protect from power theft.

Double Notching provided in Copper Contacts to hold Phosphorus Bronze Leaf Spring intact during operation. Phosphorus Bronze Leaf Spring helps in retaining the original shape of fuse carrier contact under changing temperature conditions. All Current Carrying Parts are Non-Ferrous.



Pole Mounting Aerial Fuse Cutouts

Pole Mounted Aerial Fuse Cutouts are rated from 20A to 400A, fully meeting design criteria of BS88. These are made of high quality Glass Re-inforced Polyester Moulding (DMC), which gives them unobtrusive appearance and makes them vandal resistant. Cable terminal plates incorporate M12 captive studs with nuts and washers for the reception of cable sockets up to 300mm².

- Slide fit front cover for ease of joining.
- 'Easy fit' studs accept cable socket (lugs) up to 300mm².
- Designed to accept standard 'J' type fuselinks with 82mm fixing center.
- Fully meet design criteria of IP43.
- Fuse contacts and terminal plates made from copper and bright tin plating.
- Type tested at CPRI

Other Range of Products



MCB



RCD
Add On Block



Accessories



DB



Glint Wiring
Devices



Elvira Wiring
Devices



Analog/ Digital
Time Switch



Fixed
MCCB



Adjustable
MCCB



ACB



Changeover



SD & SDF



HRC Fuses



Contactor



Overload Relay



MPCB

CORPORATE OFFICE:

V. J. Business Towers, A-6, 1st Floor, Sector-125, Noida-201301, U.P., India. Ph.: +91-0120-3305100
E-mail: sales@indoasian.com, international@indoasian.com Website: www.indoasian.com

CUSTOMER SUPPORT EXECUTIVE:

V. J. Business Towers, A-6, 1st Floor, Sector-125, Noida-201301, U.P., India.
Ph.: +91-0120-3305111 E-mail: feedback@indoasian.com

NORTH

Regional Sales office

DELHI NCR

V. J. Business Towers
A-6, Ground Floor,
Sector-125, Noida-201301
Ph.: 0120-3365300
E-Mail: in-delhi-office@indoasian.com

Branch offices

CHANDIGARH

S.C.O.-11, 2nd Floor,
Sector-26, Madhya Marg,
Chandigarh-160002
Ph.: 0172-3934651
E-Mail: in-chandigarh-office@indoasian.com

Branch offices

JAIPUR

433, 4th Floor, Ganpati Plaza,
M. I. Road,
Jaipur-302001
Ph.: 0141-4113528
E-Mail: in-jaipur-office@indoasian.com

Branch offices

LUCKNOW

301, 3rd Floor, Chintel House,
Station Road,
Lucknow-226001
Ph.: 0522-4013210
E-Mail: in-lucknow-office@indoasian.com

SOUTH

Regional Sales office

BANGALORE

787, 1st Floor "Skyline Vista"
15th Cross, 100 Feet Ring Road
J P Nagar 1st Phase
Bangalore-560 078
Tel: 080-46219999
E-Mail: in-bangalore-office@indoasian.com

Branch offices

COCHIN

Door No.65/1317, Syda Building,
2nd Floor, Kaloor-Kadavanthra Road,
Kaloor, Ernakulam District,
Kochi-682017 (Kerala)
Ph.: 0484-4055581-88
E-Mail: in-cochin-office@indoasian.com

Branch offices

COIMBATORE

Door No. 83,
Dr. Nanjappa Road,
Coimbatore-641018
Ph.: 0422-2302715
E-Mail: in-coimbatore-office@indoasian.com

Branch offices

CHENNAI

No.5, 1st Floor, Mahalingapuram Main Road,
Nungambakkam,
Chennai-600034
Ph.: 044-28172096, 28170527
E-Mail: in-chennai-office@indoasian.com

Branch offices

HYDERABAD

312, 3rd Floor,
Amrutha Estates, Himayath Nagar,
Hyderabad-500029
Ph.: 040-66742425
E-Mail: in-secunderabad-office@indoasian.com

WEST

Regional Sales office

MUMBAI

401 & 408, K.P. Arrum,
Marol Morshi Road, Andheri East,
Mumbai-400059
Ph.: 022-61035800
E-Mail: in-mumbai-office@indoasian.com

Branch offices

AHMEDABAD

102, 1st Floor, Shivalik High Street,
Near Mansi Circle, Vastrapur,
Ahmedabad-380015
Ph.: 079-29701351-53
E-Mail: in-ahmedabad-office@indoasian.com

Branch offices

INDORE

202, KK Bafna Arcade,
Janjeerwala Square, Race Course Road,
Indore-452001
Ph.: 0731-4064064
E-Mail: in-indore-office@indoasian.com

Branch offices

PUNE

1307, 4th Floor, Rajadwar Building,
Off. J. M. Road, Shivaji Nagar,
Pune-411005
Ph.: 020-60500440
E-Mail: in-pune-office@indoasian.com

EAST

Regional Sales office

KOLKATA

"Raikva Building" Room No. 8, 2nd Floor,
3A Ram Mohan Garden Lane,
Beliaghata E.M.Bypass, Kolkata-700010
Ph.: 033-66041503
E-Mail: in-kolkata-office@indoasian.com